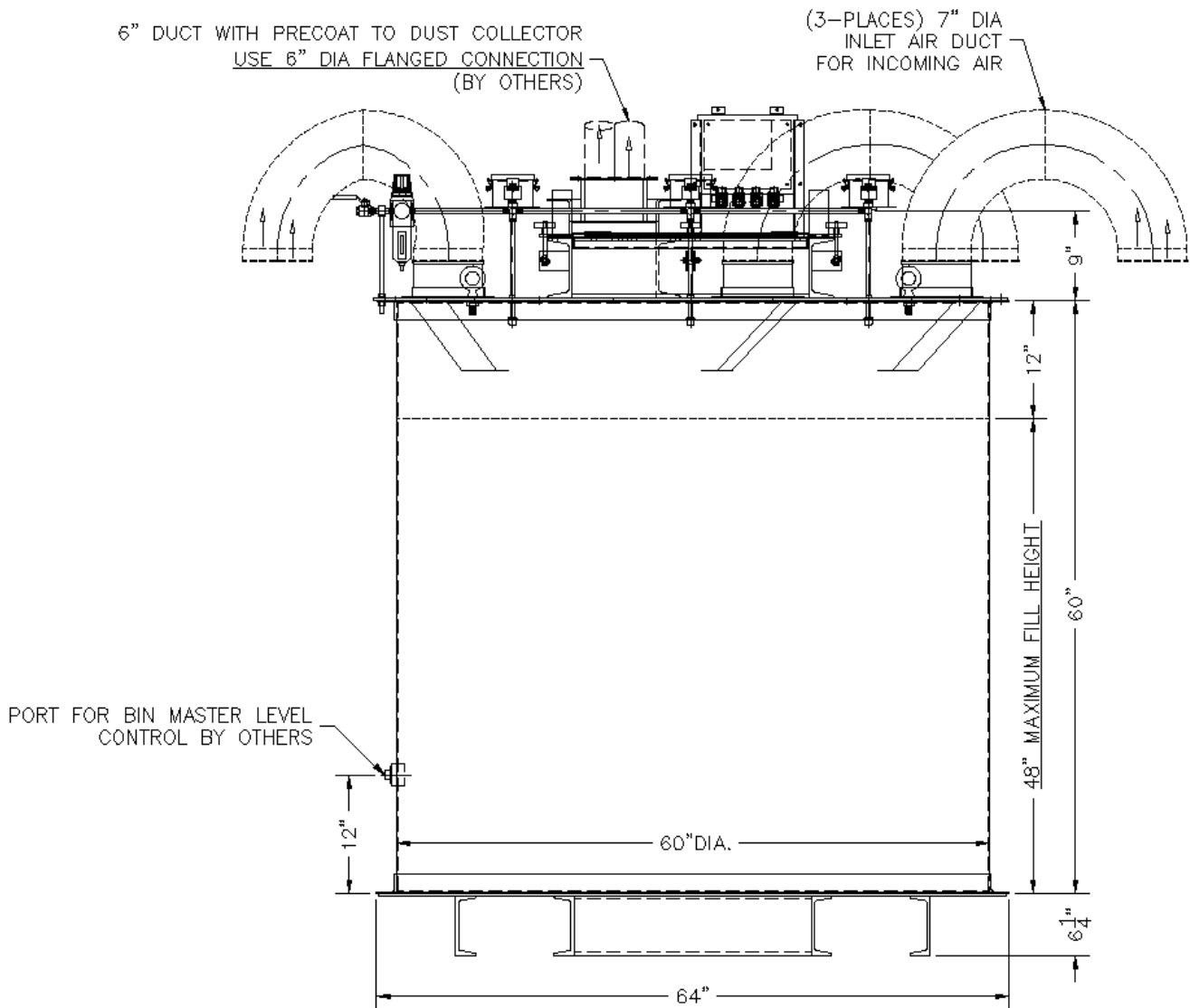


PRECOAT ASSEMBLY
60" ϕ , 6 Valves
(ASSEMBLY NO. 536282)



Receiving

The Precoat Assembly is shipped after being tested at SDC and it is pre-assembled for easy installation. When unloading, take care not to damage the external components. Move the Precoat Assembly around via the forklift slots at the bottom of the unit.

This auto drain assembly is connected to the closest diaphragm valve to the drain and "shares" the electrical/pneumatic signal with this diaphragm valve.

Installation

Move the Precoat assembly to its final location before connecting any power or ductwork.

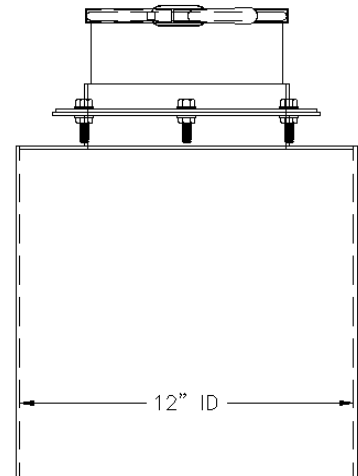
The following items will need to be connected prior to use:

- Compressed Air



- Connect Compressed Air Hose to Precoat Assembly Quick Connect.
- Check Regulator Setting. Regulator should be set to 90psig.
 - Can be adjusted higher or lower to specific system requirements.

- Ductwork

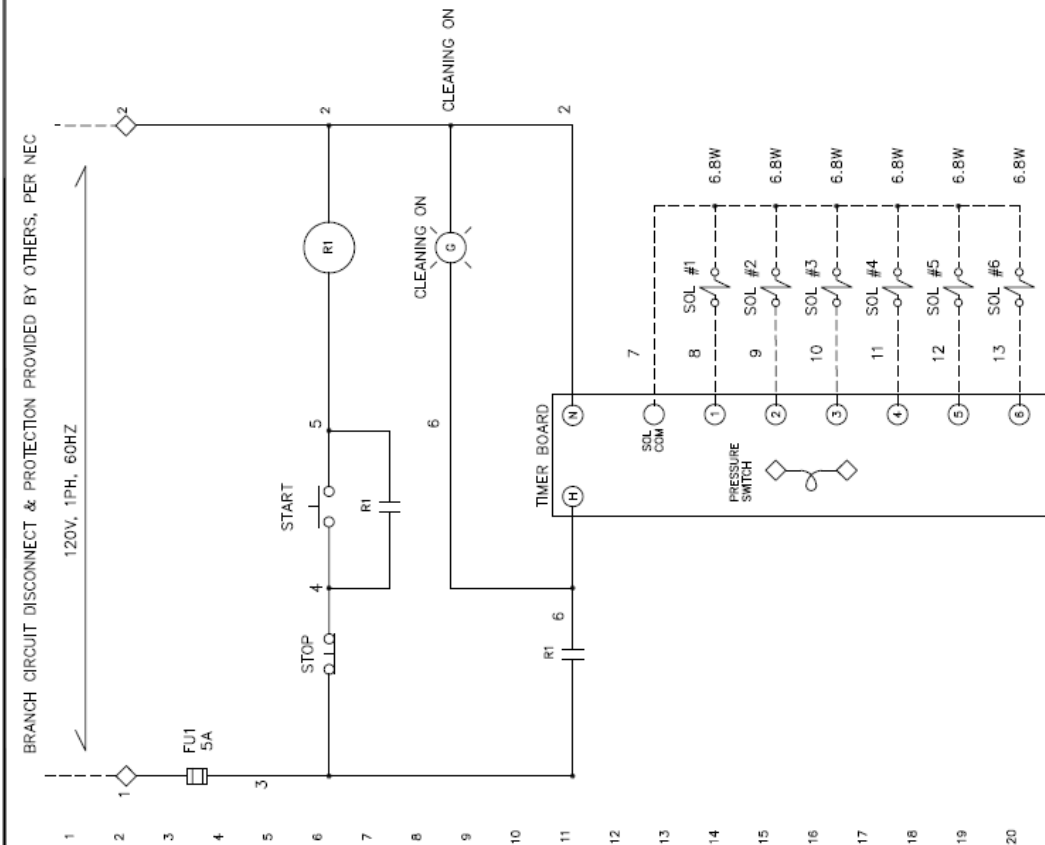


-
- Connect system ductwork to 6" Flanged connection as shown above
- Close Slide Gate (Push In)
- If applicable, install Rain Hoods on the bottom of the 90° Elbows.

- Electrical



-
- The Electrical Supply for the Control Box is 120V/1Ph/60Hz.
- See Electrical Panel Drawing #MC-40067-2 on Page 4.
- See Timer Board Wiring Diagram #W6-DWYER on Page 5.
- ON TIME SETTING: 100milliseconds (ms)
 - Can be adjusted higher or lower to specific system requirements.
- OFF TIME SETTING: 30 seconds (s)
 - Can be adjusted higher or lower to specific system requirements.



BRANCH CIRCUIT DISCONNECT & PROTECTION PROVIDED BY OTHERS, PER NEC

120V, 1PH, 60HZ



NOTES:

- ◇ - TERMINAL FOR FIELD AND INTERNAL CONNECTIONS
- INTERNAL WIRING
- - - FIELD OR SKID WIRING

THIS PRINT IS LOANED, SUBJECT TO RETURN, UPON DEMAND AND UPON THE EXPRESS CONDITION THAT IT WILL NOT BE USED DIRECTLY OR INDIRECTLY IN ANY WAY DETRIMENTAL TO OUR INTERESTS.

SD

DESIGNED & MANUFACTURED BY: **CIENFIC DUST COLLECTORS**

MIDWEST CONTROL CORP.
9003 OCTAVIA, BRIDGEVIEW, IL 60435

DUST COLLECTOR
TIMER PANEL

CHECKED BY: [] DRAWN BY: [] DATE: 02.14.11 REVISION: NONE
MIDWEST DRAWG. NO. MC-40067-2 DRAWG. NO.

Adding Precoat

The Precoat Assembly has a MAXIMUM FILL LEVEL of 48" and a MAXIMUM VOLUME of 78ft³ (For Reference: When using SIL-KLEER #17-S 25lb bag. Each bag holds 4ft³. The Precoat Assembly can accommodate nineteen (19) bags of precoat)

- Close Slide Gate
- Open Hinged Door
- Add Bag(s) of Precoat
- Close Hinged Door. Tighten Knobs to compress Gasket
- Open Slide Gate

NOTE: SLIDE GATE SHOULD BE CLOSED AT ALL TIMES WHEN THE HINGED ACCESS DOOR IS OPEN.

Operation

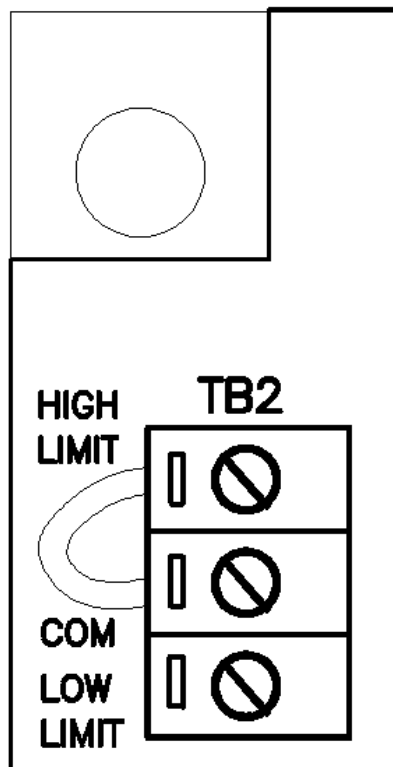
The frequency that precoat should be added to the process is dependent upon the process. Closely monitor the pressure drop and once the pressure drop on the dust collector continues to increase and does not decrease with the pulse cleaning, more precoat should be added.

- Open Slide Gate.
- Press **GREEN** ON Button
- Allow precoat system to cycle for three to five minutes
- Press **RED** OFF Button
- Close Slide Gate.

Automatic Operation

If a pressure monitor or smart timer board is installed on the dust collector, it can be used to control the operation of the precoat based upon a High Limit pressure. To do this, follow the instructions below.

- Press **RED** OFF Button
- Remove the jumper from the HIGH LIMIT terminal on the Dwyer Timer board installed inside the control panel.



-
- Connect contact from High Limit pressure switch to HIGH LIMIT terminal.
- Press **GREEN** ON Button
- Monitor pressure drop and ensure Precoat system pulses once the High Limit pressure drop has been reached.
- **NOTE:** When using Automatic operation, it may be beneficial to increase the OFF TIME from 30 seconds to regulate the amount of precoat introduced over the period of time it will take for the pressure drop to decrease to turn the HIGH LIMIT switch off.
 - **Timer board has a maximum OFF TIME of 180 seconds.**